



# **Boost VR**

## **Risk-Free Varnish Removal**

Removes Varnish Deposits | Fully Compatible With Your Oil



# REMOVE VARNISH DEPOSITS & EXTEND THE LIFE OF YOUR LUBRICANTS

## NO RISK, NO LABOR and 1/3 THE COST

### The Alternative or Complement to an oil flush

Boost VR is a safer way of removing varnish and deposits from a lube system compared to detergent system cleaners. Unlike conventional cleaners, Boost VR can safely be used in steam and hydro-electric turbines as well as other applications where there is a high chance of water or steam ingress.



*Filters before Boost VR*

## BOOST VR BENEFITS

- 🔧 Cleans the internals of your system
- 🔧 Increases solubility allowing deposits to be dissolved
- 🔧 Improves MPC values
- 🔧 Fully compatible – no adverse impact on oil
- 🔧 Reduces bearing temperatures
- 🔧 No need for chemical / detergent flushing
- 🔧 Does not impact outage resources
- 🔧 3 times the value of traditional flushing

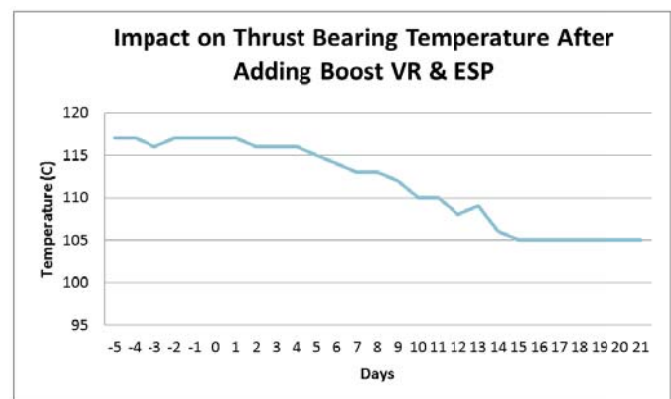


*Filters 1 week after adding Boost VR*

## IT REALLY IS THAT EASY...

Simple, Effective, Risk-Free Steps to Clean your Lube System:

1. Add Boost VR 3 months prior to an outage
2. Connect an ESP System to remove the solubilized contaminants
3. At the start of the outage, replace the oil



# BOOST VR + ESP

## FULL VARNISH ELIMINATION

### Boost VR + ESP (Electro-physical Separation Process)

System cleanliness is restored with no outage requirements. Fluitec provides Boost VR and ESP System (when necessary).

## HOW IT WORKS

Enhances the oil's solubility which re-dissolves deposited degradation products back into the oil.

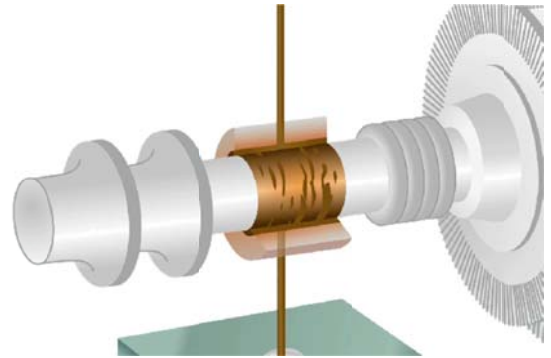
Boost VR is a specialized synthetic base oil (API GV) and is fully compatible with your turbine oil.

Unlike other cleaning agents, Boost VR enhances your oil's deposit control and has no adverse impact on other oil properties (demulsibility, foam, rust, seal compatibility, etc.)

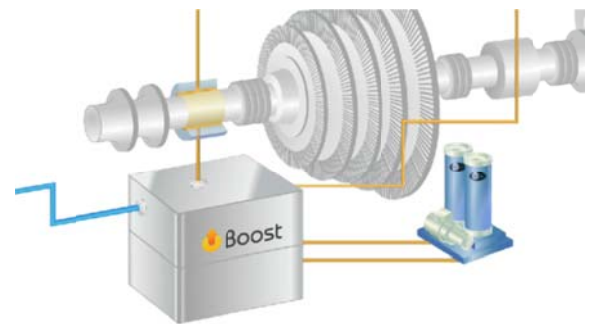
ESP removes the solubilized varnish from the oil which allows more deposits to re-dissolve back into the oil

## ESP

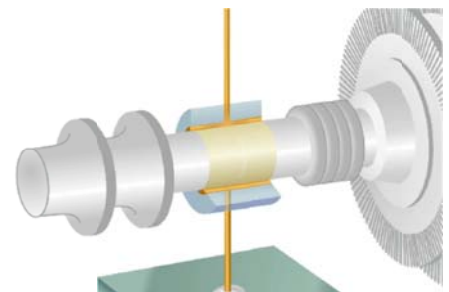
Use Fluitec's VITA ESP delivery systems to remove varnish from the oil while Boost VR removed varnish deposited within your systems.



*Boost VR re-dissolves deposited varnish back into the oil*



*ESP removes the Varnish from the oil*



*System cleanliness is restored*



VITA ESP III



VITA ESP II

# BOOST VR SPECIFICATIONS

TEST	METHOD	TYPICAL VALUE
Specific Gravity(15.6C)	D4052	0.008
Color	D1500	<1.5
Appearance	Clear & Bright	Visual
Viscosity	D445	
@40C @100C		29.0 mm2/s 4.7mm2/s
Flash Point (COC)	092	222C
Total Acid Number	0974	<0.05 mg KOH/g



## Boost VR Applications

- 🔥 Gearboxes
- 🔥 Air Compressors
- 🔥 Turbine Systems
- 🔥 Boiler Feed Water Pumps
- 🔥 Hydraulic Systems
- 🔥 Vacuum pumps
- 🔥 Centrifugal & Axial Compressors
- 🔥 NSF H1 Compressors
- 🔥 Circulating Oils

